

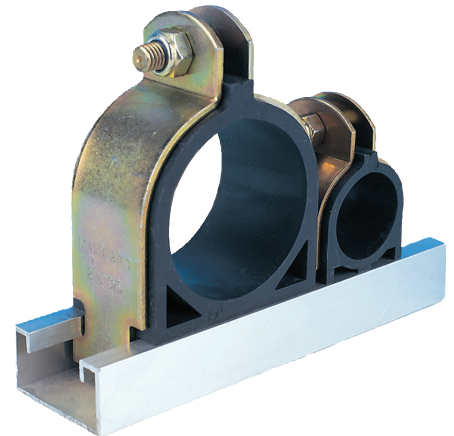


PIPE SUPPORT



insulclamp

Channel clip ideal for bigger commercial air conditioning and refrigeration installations.



Channel



Rod



Surface

KEY FEATURES

- Easy installation into 40mm x 40mm and 40mm x 20mm channel
- Insulates against heat loss and reduces vibration
- Quick to install with lock nuts
- Fits into shallow void
- Supports individual pipes into a thermo-rubber cushion between two metal plates
- Thermo-rubber cushion insert withstands maximum temperature of 130°C (zinc bracket 1000°C)

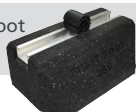
SPECIFICATIONS

Materials of construction	Zinc passivated steel with rubber cushion
Max. temp	1000°C
Max. Rec. distance per clip	1.2m

OTHER PROPERTIES

Thermal conductivity	K = 0.27 W/m°C
----------------------	----------------

Compatible with Fix-it Foot from Big Foot Systems



Aluminium Channel (3m lengths) available: Part No. B6023



SIZING OPTIONS

Size	Max. Unsupported Span (m)	Height Above Channel (mm)	Part No. (Plastic Bag)	Pack Qty (Plastic Bag)
1/4"	1.2m	32	B6268	10
3/8"	1.2m	35	B6274	10
1/2"	1.2m	38	B6267	10
5/8"	1.2m	41	B6276	10
3/4"	1.2m	44	B6273	10
7/8"	1.2m	47	B6277	10
1 1/8"	1.2m	54	B6264	10
1 3/8"	1.2m	60	B6265	10
1 5/8"	1.2m	76	B6266	10
2 1/8"	1.2m	92	B6269	5
2 5/8"	1.2m	98	B6270	5
3 1/8"	1.2m	117	B6271	5
3 5/8"	1.2m	130	B6272	5
4 1/8"	1.2m	143	B6275	5

