

AIR BENDER

MAGNETIC AIR DEFLECTOR

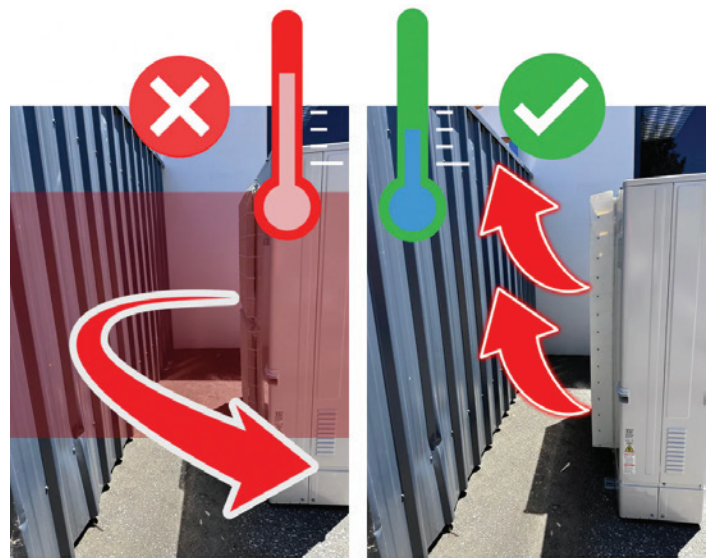


IMPROVE YOUR AIR CONDITIONING PERFORMANCE

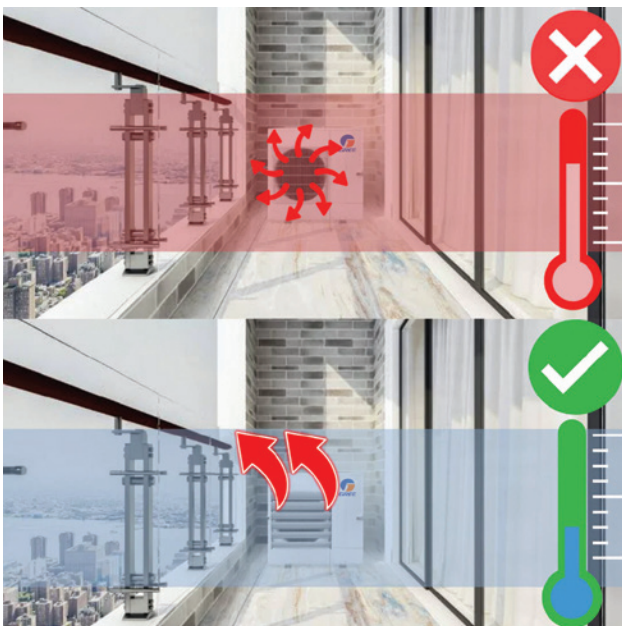
Your air conditioner will not work if there is not enough airflow around the outdoor unit. A fence or a wall within 1.5m of the front of your air conditioning outdoor unit will cause serious performance issues, especially during High and Low temperatures (when you need it the most!).

Performance can drop up to 50% with inadequate ventilation as the air recirculates, freezing or overheating the AC system. Fix this by installing an Air Bender | Magnetic Air Deflector. Improve airflow by deflecting the air upwards, away from a fence or obstruction.

Our deflector is designed to be easily removable for access past the unit and can be removed and re-installed multiple times.



DIVERT UNWANTED AIRFLOW FROM BALCONIES OR ENTERTAINMENT AREAS

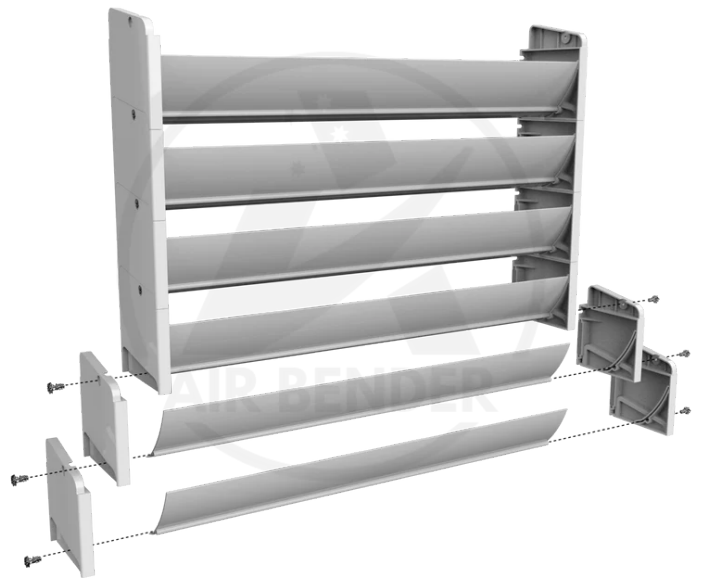


If you have an air conditioning unit installed on a balcony or within an entertainment area, you can now divert the unwanted air from the unit with an Air Bender | Magnetic Air Deflector. Re-direct the air sideways or upwards at a 45 degree angle without affecting the unit's performance.

AC covers can drastically reduce airflow and cause the unit performance to struggle, with an Air Bender | Magnetic Air Deflector, airflow is maximised while deflecting air away from your guests.

FEATURES AND BENEFITS

- Available in four sizes
- DIY installation, no drilling required
- Magnetic to all metal air conditioners
- Flat packed for convenience
- Easily assembled
- Deflect air up or sideways to improve performance
- Prevents unwanted air blowing into entertainment areas
- Reduces backflow through the unit due to adverse wind conditions



AIR BENDER MAGNETIC AIR DEFLECTOR

Stock No.	Description	Size (mm)	Internal Size (mm)
AC0024	Air Bender Deflector SMALL	500 x 455	505 x 450
AC0025	Air Bender Deflector MEDIUM	600 x 510	607 x 534
AC0026	Air Bender Deflector LARGE	600 x 595	607 x 624
AC0027	Air Bender Deflector EXTRA LARGE	650 x 595	655 x 624