

# RMV -450 - Enclosed

## Unit Selection Guide

Item Stock Code	Description	Nominal Duty kW
C6736	MilkVat RMV450 (ENCLOSED)	10.3

## Technical Data

STOCK NO.	MODEL	COMPRESSOR					FAN MOTOR			REC VOL. (L)	PIPE CONNECTIONS		
		MODEL	PHASE	HP	DISP./ COMP (cm <sup>3</sup> )	MRA	No. x SIZE	AIRFLOW m <sup>3</sup> /h	MRA/ MOTOR		SUCTION mm(inch)	LIQUID mm(inch)	WEIGHT (KG)
C6736	RMV450 (ENCLOSED)-TEM	TAG4553Z	3	4.1/2	100.70	14.35	2 x 350	1459	0.70	9.5	22.2 (7/8)	12.7 (1/2)	146

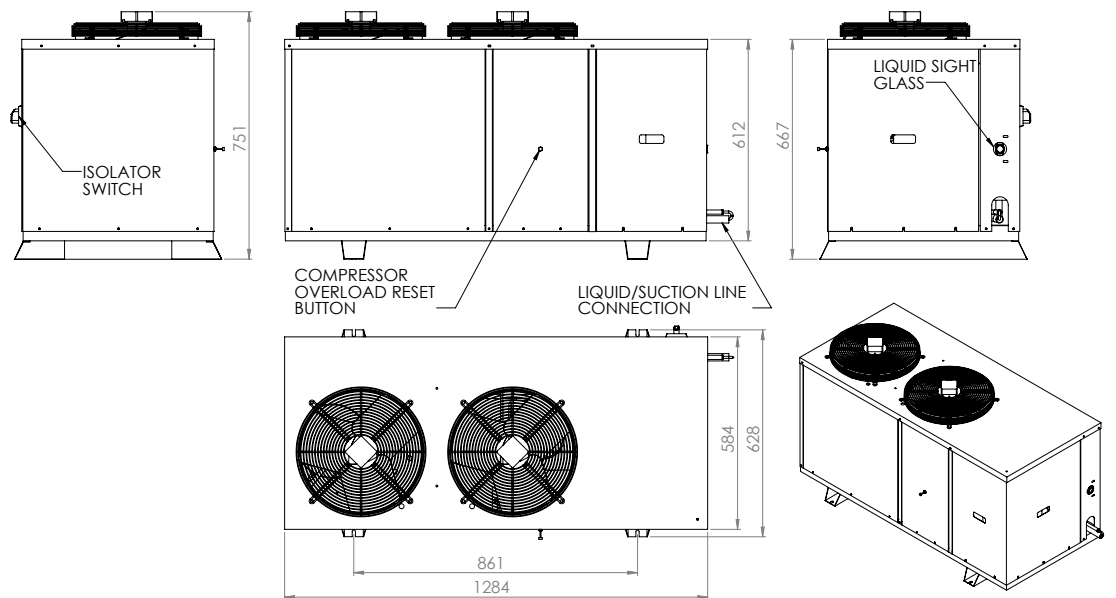
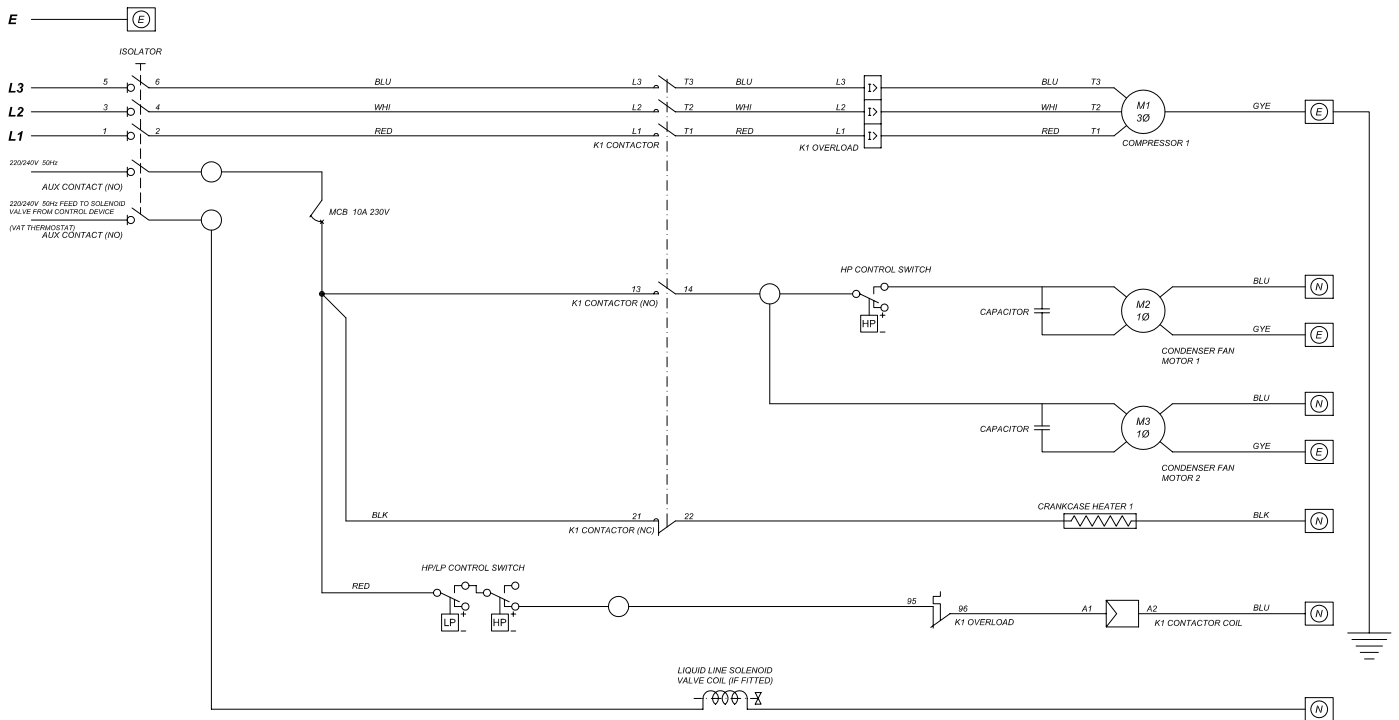
OVERALL DIMENSIONS (mm)			SOUND POWER LEVEL dBA	WEATHER SHIELD	ACCESSORIES									
LENGTH	WIDTH	HEIGHT			OIL SEP	L/LINE DRIER	L/SIGHT GLASS	L/SOL. VALVE	SUCTION ACC.	PRESSURE R. VALVE	DP Switch	HP (Fan) Switch	CAREL FAN SPEED CTRL	
1285	625	820	78	N/A	YES	YES	YES	YES	-	YES	YES	YES	-	

Nominal Capacity @ 0°C SST/ +32°C Ambient on R404a  
All models are 380-415V 3PH 50Hz

**Australia** [www.realcold.com.au](http://www.realcold.com.au)  
1800 REALCOLD [sales@realcold.com.au](mailto:sales@realcold.com.au)  
**New Zealand** [www.realcold.co.nz](http://www.realcold.co.nz)  
0800 11 66 90 [parts@realcold.co.nz](mailto:parts@realcold.co.nz)

**realcold**  
People  
Product  
Partnerships

# RMV -450 - Enclosed



**Australia** [www.realcold.com.au](http://www.realcold.com.au)  
 1800 REALCOLD [sales@realcold.com.au](mailto:sales@realcold.com.au)  
**New Zealand** [www.realcold.co.nz](http://www.realcold.co.nz)  
 0800 11 66 90 [parts@realcold.co.nz](mailto:parts@realcold.co.nz)

**realcold**  
 People  
 Product  
 Partnerships