

RMV - 600 Enclosed

Unit Selection Guide

Item Stock Code	Description	Nominal Duty kW
C6737	MilkVat RMV600 (ENCLOSED)	14.6

Technical Data

STOCK NO.	MODEL	COMPRESSOR					FAN MOTOR			REC VOL. (L)	PIPE CONNECTIONS		
		MODEL	PHASE	HP	DISP./ COMP (cm ³)	MRA	No. x SIZE	AIRFLOW m ³ /h	MRA/ MOTOR		SUCTION mm(inch)	LIQUID mm(inch)	WEIGHT (KG)
C6737	RMV600 (ENCLOSED)-TEM	TAG4573Z	3	6.1/4	134.80	19.0	2 x 350	1402	0.70	9.5	22.2 (7/8)	12.7 (1/2)	150

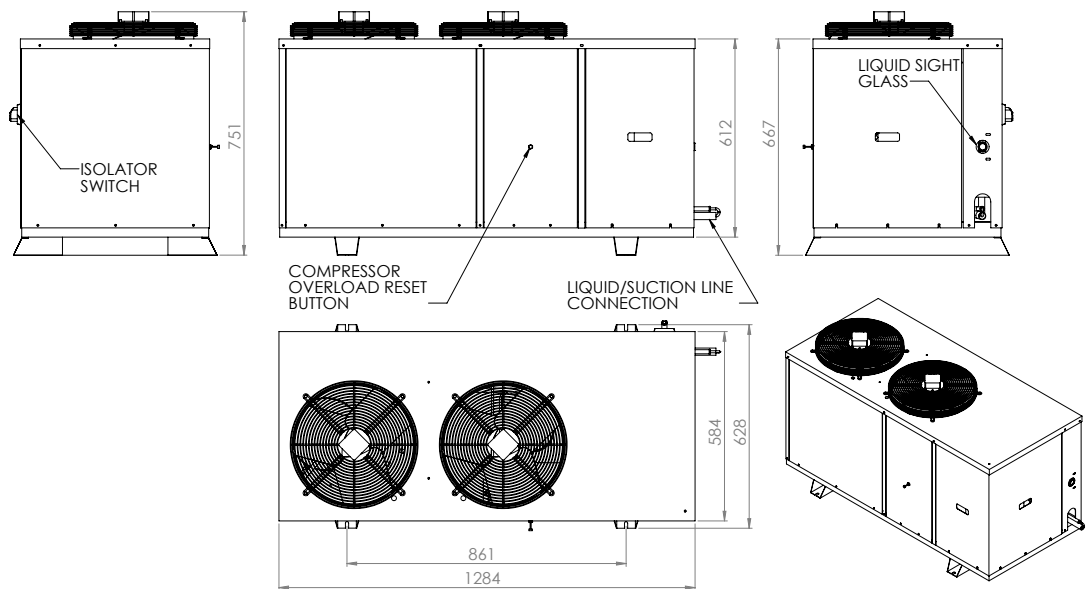
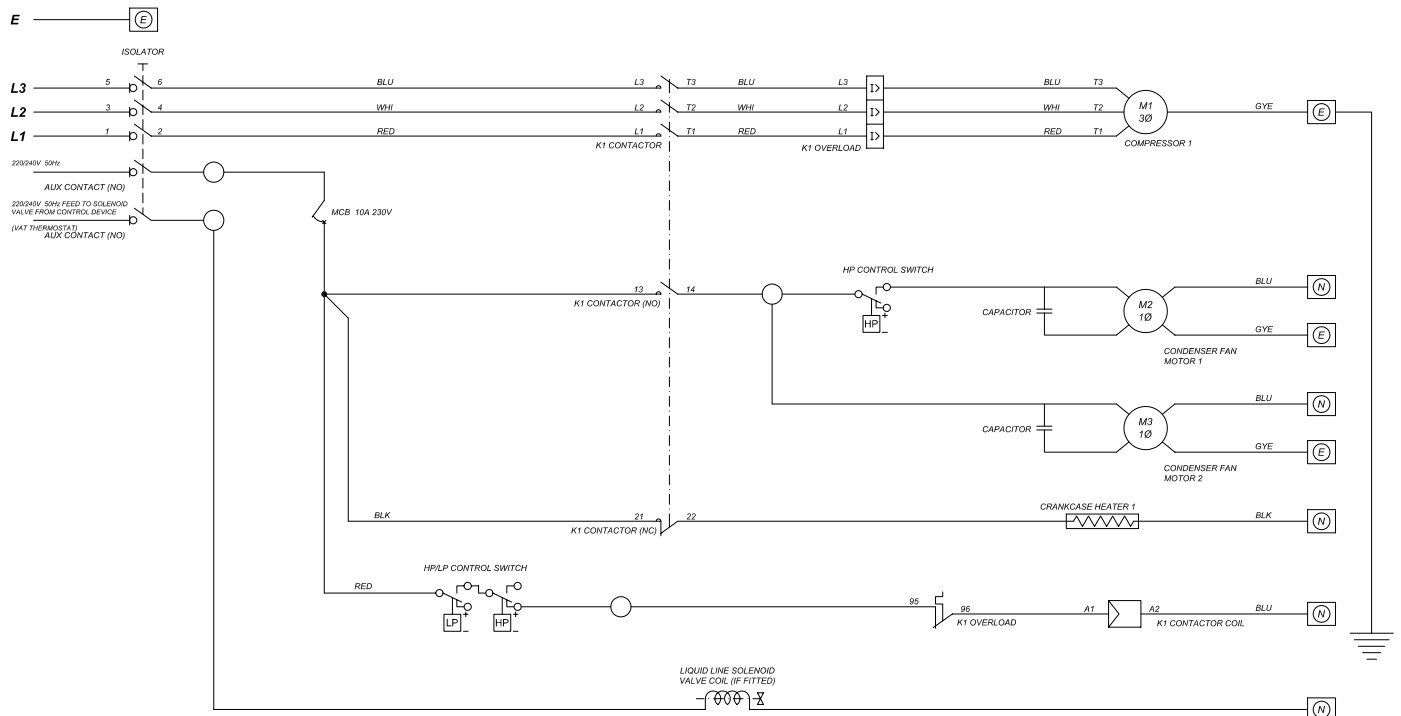
OVERALL DIMENSIONS (mm)			SOUND POWER LEVEL dBA	WEATHER SHIELD	ACCESSORIES								
LENGTH	WIDTH	HEIGHT			OIL SEP	L/LINE DRIER	L/SIGHT GLASS	L/SOL. VALVE	SUCTION ACC.	PRESSURE R. VALVE	DP Switch	HP (Fan) Switch	CAREL FAN SPEED CTRL
1285	625	820	77	N/A	YES	YES	YES	YES	-	YES	YES	YES	-

Nominal Capacity @ 0°C SST/ +32°C Ambient on R404a
All models are 380-415V 3PH 50Hz

Australia www.realcold.com.au
1800 REALCOLD sales@realcold.com.au
New Zealand www.realcold.co.nz
0800 11 66 90 parts@realcold.co.nz

realcold
People
Product
Partnerships

RMV - 600 Enclosed



Australia www.realcold.com.au
 1800 REALCOLD sales@realcold.com.au
New Zealand www.realcold.co.nz
 0800 11 66 90 parts@realcold.co.nz

realcold
 People
 Product
 Partnerships