

E37

Liquid level and ice thickness electronic regulator



Applications

The regulators E37 detect the electrical conductivity between a group of electrodes and change the status of the output switch in accordance with the change of conductivity. They are available in different versions with two or three sensor electrodes and SPDT or SPST relay output. Stainless steel L56 sensors compatible with E37 regulators have been specially designed.

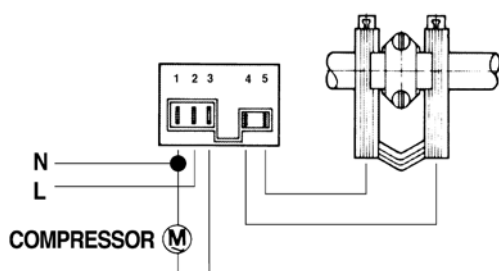
Common features

E37

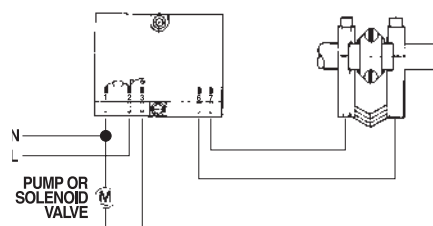
Power consumption:	less than 3VA
Ambient temperature during operation:	0 °C to 60 °C
Storage temperature:	-25 °C to 85 °C
Input/output isolation:	2.5kV
Terminal sizes:	input 6.3 mm / sensor 4.8 mm
Sensor:	L56 STAINLESS STEEL

Part number	Application	Power supply	Configuration		Relay current		Resistance (K ohm)			Delay (sec.)	
			Sensors	Relay	Inductive	Resistive	Cut on relay	Cut-off relay	Diff.	Cut on relay	Cut-off relay
E37M1121001	ice bank/ liquid	220V- 50 Hz	2	SPST	5A	10A	47	85	38	2	25
E37M1156001	ice bank/ liquid	220/240V- 50 Hz	2	SPST	4A (max 20A)	4A	47	85	38	2	25
E37M1157001	ice bank/ liquid	115V- 60 Hz	2	SPST	4A (max 20A)	4A	47	85	38	2	25
E37M1201001	Liquid level or ice thickness	220/240V- 50 Hz	3	SPDT	4A (max 20A)	10A	47	85	72	\	\
E37M1204001	Liquid level or ice thickness	120V- 60 Hz	3	SPDT	4A	10A	45	85	72	\	\

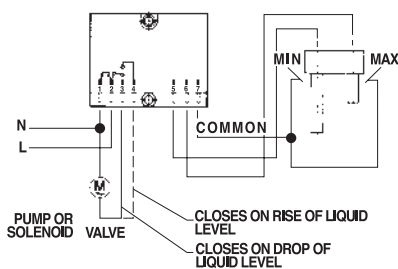
Wiring diagrams



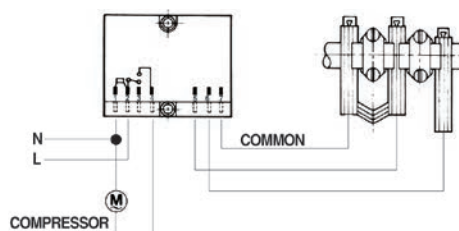
E37 - 1156 and 1157 Ice bank or liquid



E37 - 1121 Ice bank or liquid



E37 - 1201 and 1204 Liquid level



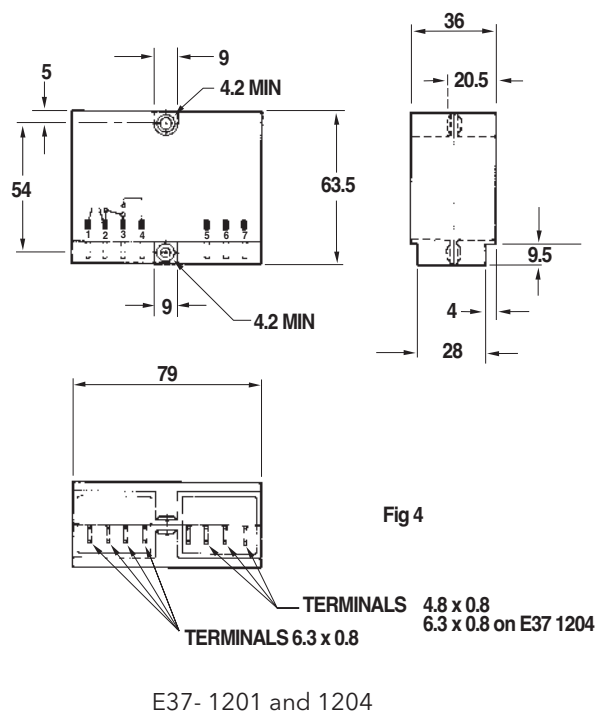
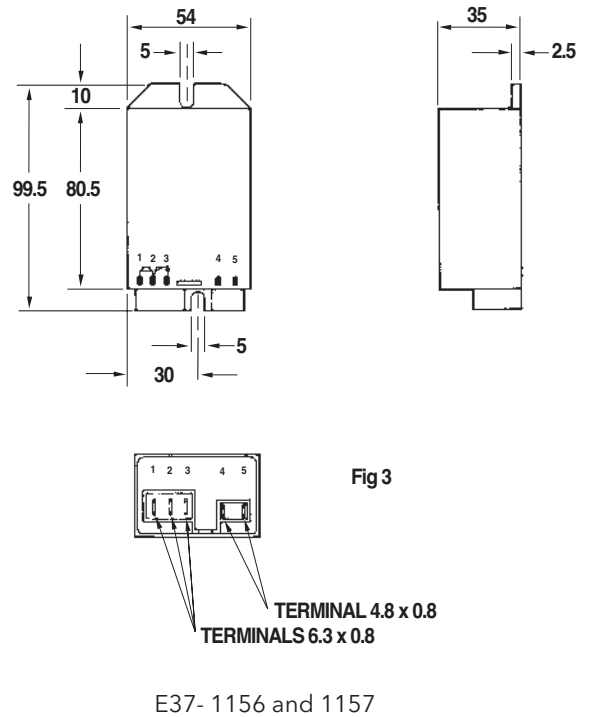
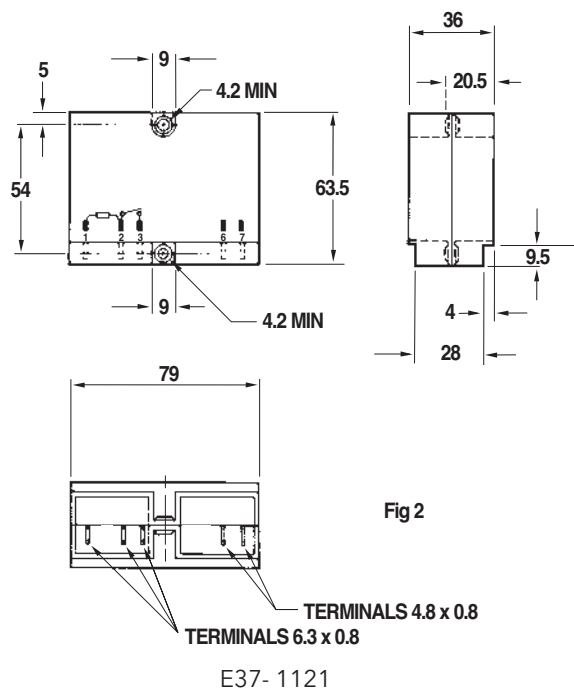
E37 - 1201 and 1204 Ice bank differential

E37

Liquid level and ice thickness electronic regulator

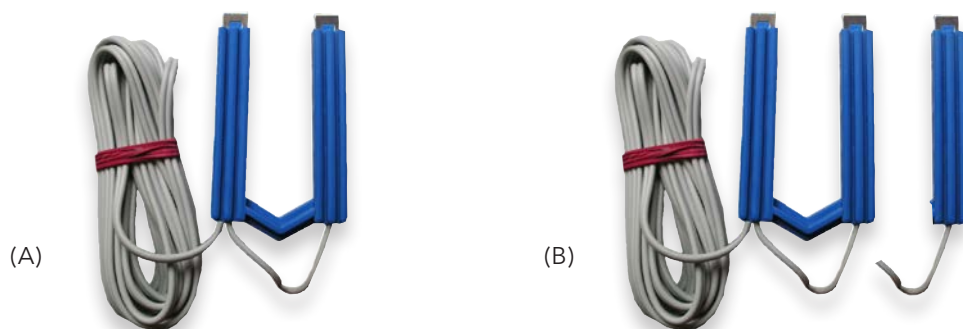


Dimensions



L56

Liquid and ice sensor



Applications

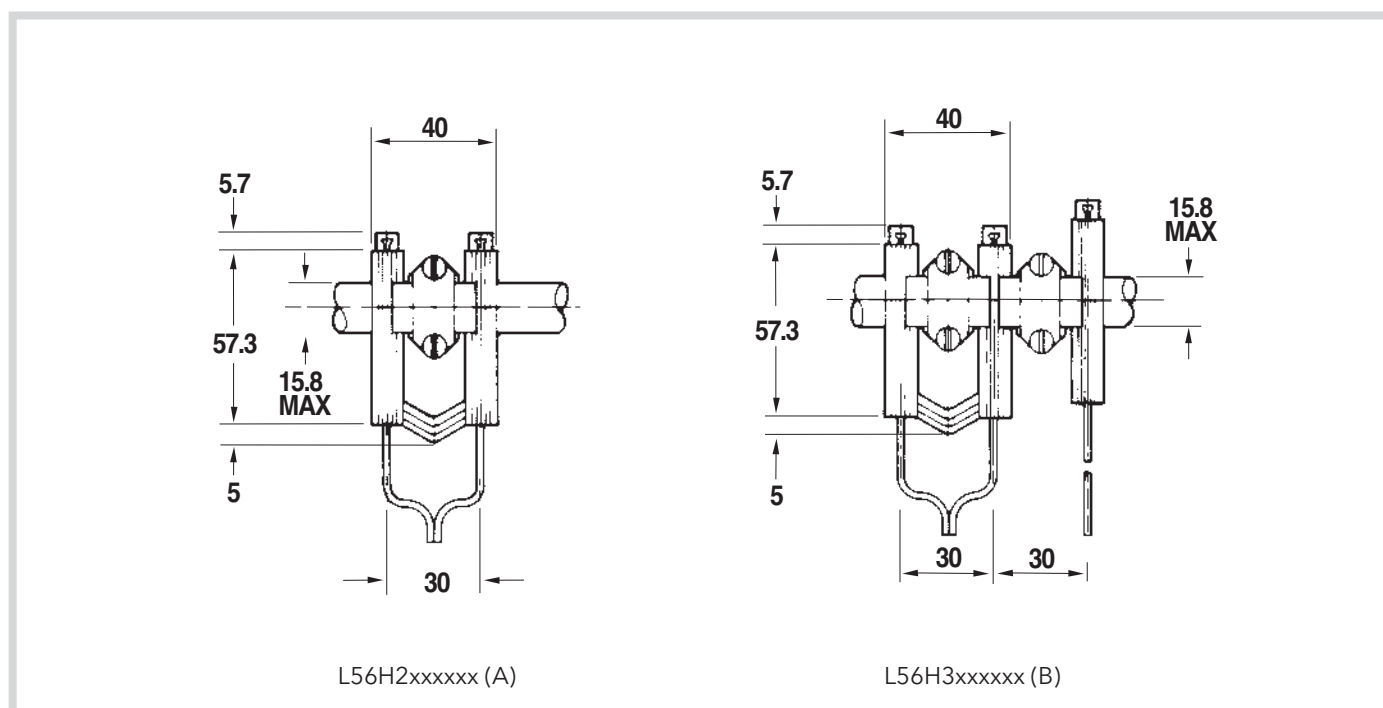
The L56 sensor is used in combination with the E37 controller to measure accurately and reliably the variation of conductivity, typically between air and water, or between water and ice.

Each pack includes specific mounting accessories.

Part number	Description - Cable length	Application	Sensing element material	Type electrode	Compatible controller
L56H2001001	L56 electric probe 3 metres	ice bank /liquid	stainless steel	(A)	E37M11xxxxx
L56H2002001	L56 electric probe 5 metres	ice bank /liquid	stainless steel	(A)	E37M11xxxxx
L56H2006001	L56 electric probe 12 metres	ice bank /liquid	stainless steel	(A)	E37M11xxxxx
L56H2015001	L56 electric probe 1.5 metres	ice bank /liquid	stainless steel	(A)	E37M11xxxxx

Part number	Description - Cable length	Application	Sensing element material	Type electrode	Compatible controller
L56H3001001	L56 electric probe 3 metres	Liquid level or ice thickness	stainless steel	(B)	E37M12xxxxx

Dimensions and installation



L56H2xxxxxx (A)

L56H3xxxxxx (B)