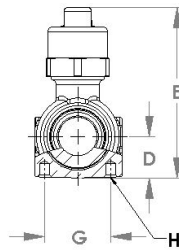
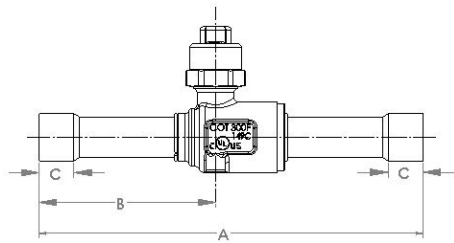



**Features:**

- Design Pressure (DP) / Maximum abnormal pressure (MAP): 2031 psi, 140 bar
- Continuous operating temperature (COT): -40°F/300°F, -40°C/149°C
- For R-744 with POE and PAG oil
- Brass body with copper-iron alloy connections
- Bleed hole in ball minimizes potential for liquid entrapment
- Full port construction to match line size
- Rupture-proof, internally-loaded stem
- Specially selected o-ring material compatible for CO<sub>2</sub> operating conditions
- UL/cUL Listed, Conforms to EU Pressure Equipment Directive and UK Pressure Equipment Regulation

**Standard**


**Installation recommendation:**  
 Install the HP side so that it is oriented to the high pressure side of the system.

Part Number	Size		Cv	Kv	A		B		C Min		D		E		G		H	Port (in)	Wt		Seal Cap Kit
	in	mm			in	mm	in	mm	in	mm	in	mm	in	mm	in	mm			lb	kg	
AP17859XHP	1/4	6	1.0	1	5.00	127	2.26	57	0.25	6	0.54	14	2.22	56	0.87	22	M4 X 0.7	0.50	0.48	0.22	A 17842
AP17860XHP	3/8	10	4.3	4	5.20	132	2.36	60	0.31	8	0.54	14	2.22	56	0.87	22	M4 X 0.7	0.50	0.49	0.22	A 17842
AP17861XHP	1/2	13	6.2	5	5.47	139	2.50	64	0.38	10	0.54	14	2.22	56	0.87	22	M4 X 0.7	0.50	0.51	0.23	A 17842
AP17862XHP	5/8	17	12.1	10	5.83	148	2.68	68	0.50	13	0.54	14	2.22	56	0.87	22	M4 X 0.7	0.50	0.52	0.24	A 17842
A 17863XHP	3/4	19	19.0	16	5.83	148	2.76	70	0.62	16	1.28	33	3.35	85				0.75	1.59	0.72	A 17843
A 17864XHP	7/8	22	27.5	24	7.27	185	3.48	88	0.75	19	1.28	33	3.35	85				0.75	1.59	0.72	A 17843
A 17865XHP	1 1/8	29	54.0	47	7.27	185	3.52	89	0.91	23	1.47	37	3.88	99				1.00	3.04	1.38	A 17843
A 17866XHP	1 3/8	35	89.1	77	8.06	205	4.03	102	0.97	25	1.38	35	3.92	100				1.25	4.42	2.00	A 17844
A 17867XHP	1 5/8	41	114.0	99	9.46	240	4.73	120	1.09	28	1.59	40	4.33	110				1.50	6.60	2.99	A 17844
A 17868XHP	2 1/8	54	244.0	211	10.84	275	5.42	138	1.34	34	2.07	53	5.53	140				2.00	13.43	6.09	A 17845